



# Totalförsvaret för ett starkare Gotland

Slutrapport för regeringens uppdrag till  
Försvarmakten och Länsstyrelsen i  
Gotlands län

Bilaga 28: Övergripande presentation av  
Utvecklingssatsningen för kunskapsspridning - engelska

Utgiven av: Länsstyrelsen i Gotlands län

Slutrapportens diarienummer: 459-3824-2017

Kontaktperson: Kicki Scheller, Länsstyrelsen i Gotlands län

Tryckår: 2022

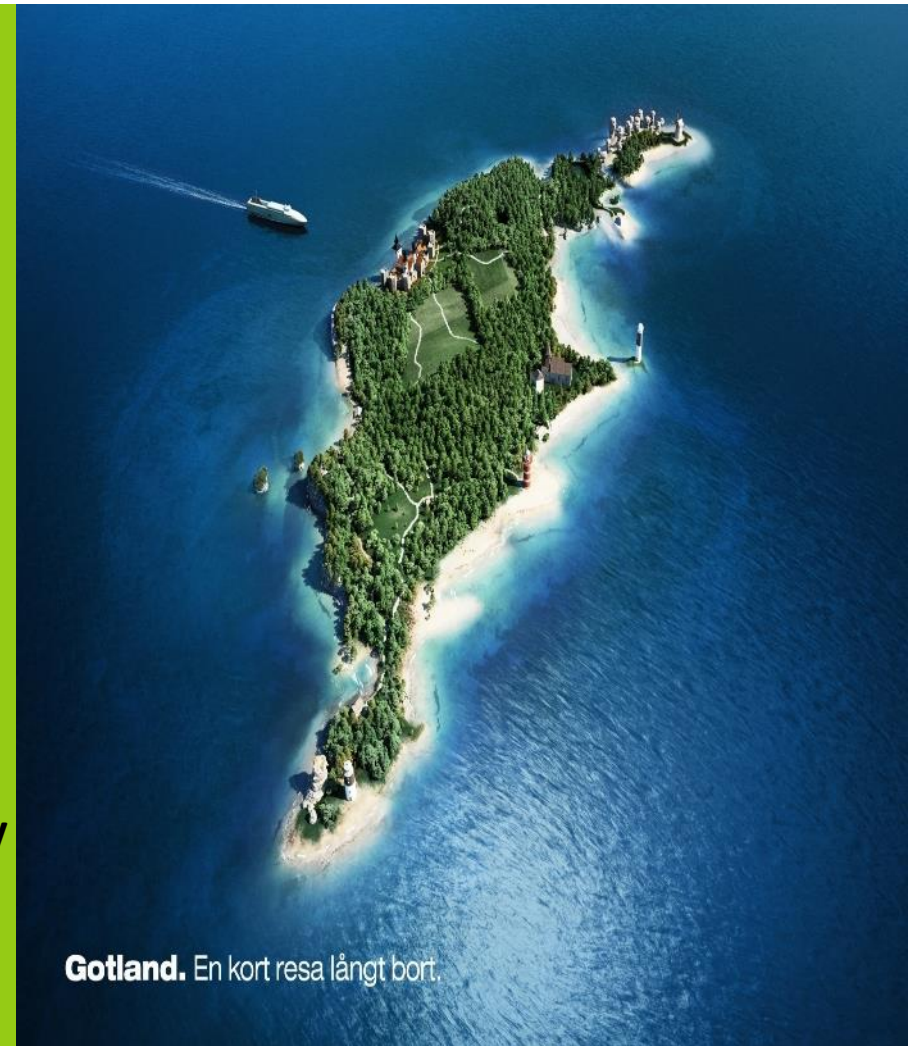
Slutrapporten med bilagor finns att hämta i PDF-format på Länsstyrelsens webbplats: [www.lansstyrelsen.se/gotland](http://www.lansstyrelsen.se/gotland)

# Länsstyrelsen Gotland County Administrative Board



# Gotland – a miniature Sweden

- 3140 Km<sup>2</sup> (0,85% of Sweden's land area) - 800 km coast
- Approx. 59 000 inhabitants (equally divided W/M). Increasing!
- 28 000 households, 10 000 places of work, 27 000 employed
- 64 000 annual mail distributions
- During peak season the number of inhabitants doubles
- Almost 1 million guest nights annually
- > 4500 businesses - 250 new / year
- 2, 2 million passengers to/from the island / year
- Services industry, agriculture and tourism
- Lowest unemployment in the country
- The municipality Region Gotland is approx. 40th largest county in Sweden with 6 500 employees



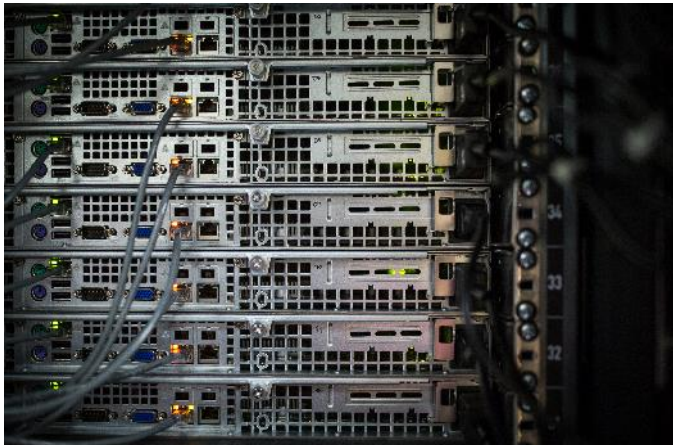
**Gotland.** En kort resa långt bort.

# Agenda

- The County Administrative Board's role in emergency preparedness and crisis management
  - Collaboration
  - Civil defence
  - Total defence
  - Energy supply



# The effective but vulnerable society.

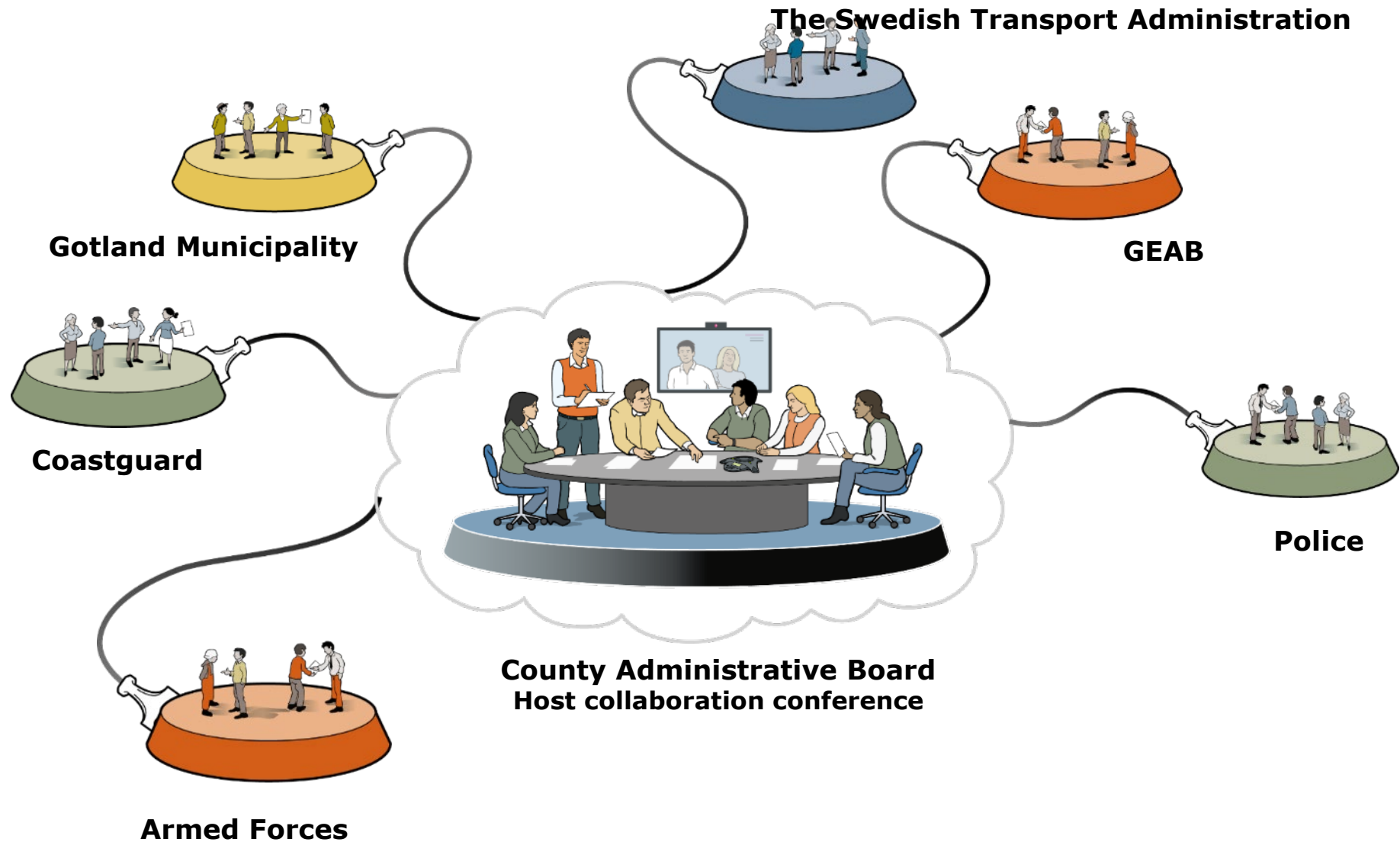


# The role of the County Administrative Board

- A coordinating function during emergencies and crisis within the county
- Responsible for the county's civil defence
- Coordinate emergency preparedness and response efforts within the county
- Coordinate efforts between local and national actors during a crisis
- Make contacts with local, regional and national actors before, during and after societal disturbances
- Implement proactive and preventative measures together with local, regional and national actors



# Examples of regional cooperation during a crisis





# Civil defence

As the responsible authority for civil defence the County Administrative Board needs to:

- Coordinate civil defence
- Coordinate civil- and military defence together with the Swedish Armed Forces
- Ensure that the defence efforts are aligned
- Ensure that the County's recourses are used in the most effective way to strengthen the defence



# Civil defence 2018-2020 a few examples

- Re-building total defence capacity
- Regional exercise 2019
- Total defence exercise 2020
- Robust communications and information security
- Capacity to lead during crisis
- Wartime organisation
- Protected sites/locations



# Goals for civil defence

- Protection of civilians
- Ensure functionality of critical government services
- Ensure civil societies support to the Swedish Armed Forces
- *The role of the County Administrative Board:*  
Authority responsible for the county's civil defence and for working toward making the defence more effective

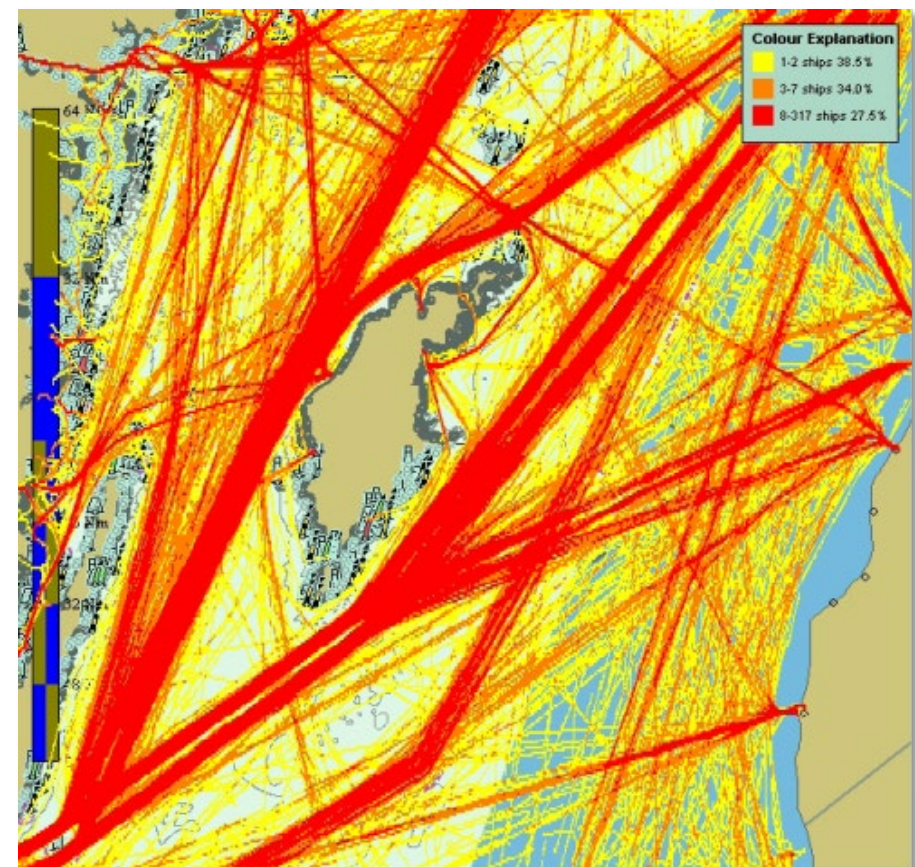
# ‘Total defence’ development program 2017- 2020



Avstånd från Visby  
Inre ring 200 km  
Yttre ring 400 km

0 50 100 200 Kilometer

© Länsstyrelsen i Gotlands län, Lantmäteriet





# The assignment

**Government assignment to expand cooperation and coordination between the County Administrative Board and the Swedish Armed Forces for total defence in the county of Gotland**

- Material and personnel resources
- Exercises carried out by 2020
- The assignment has been allocated 8 + 2 MSEK/year (2018-2020)
- Base efforts on existing structures
- Maintain long-term

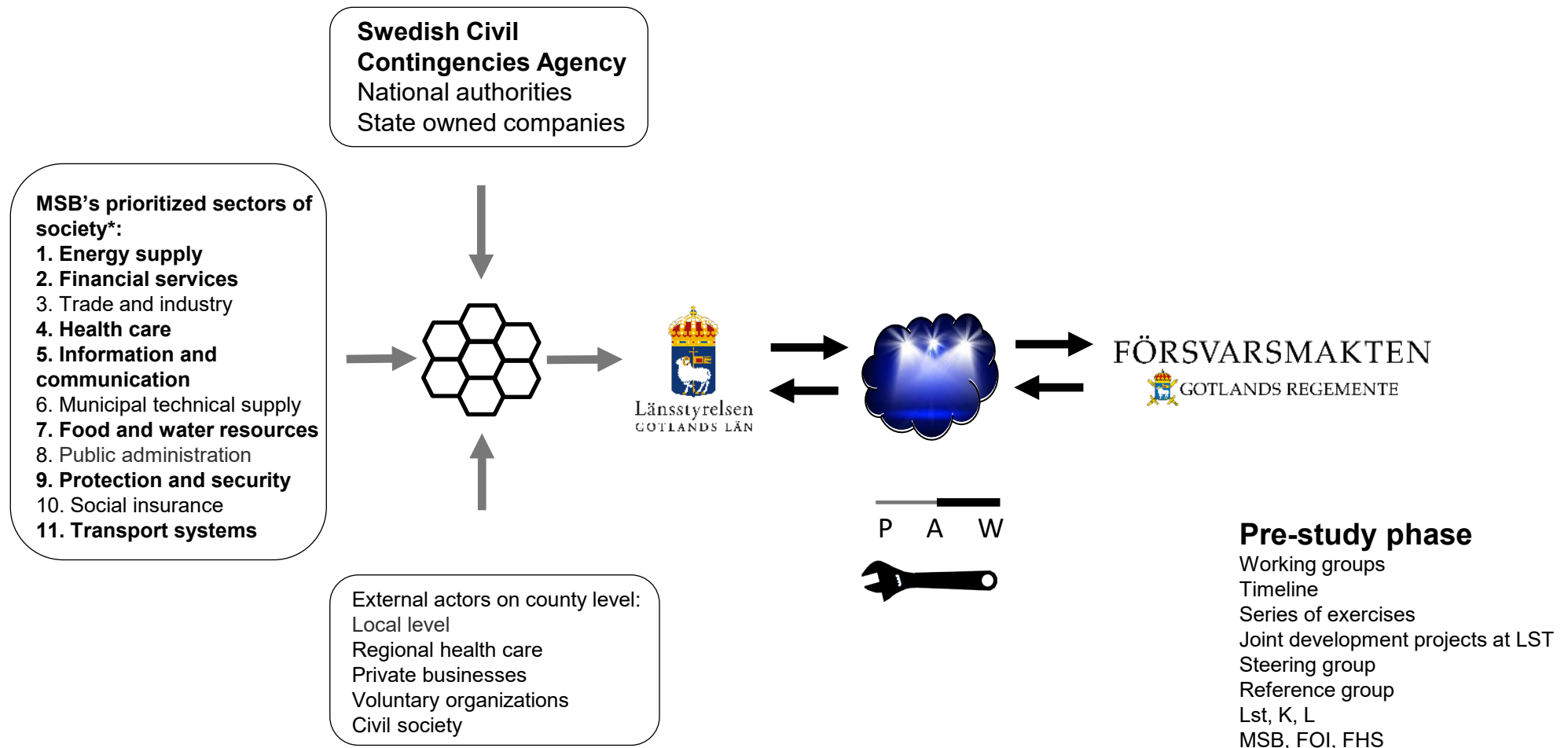




# Goals for the total defence development program

- Ability to support the Swedish Armed Forces
- Ability to practice the laws and bylaws that come into effect during heightened alert/war
- Methods/practices for collaboration during heightened alert/war
- Investigate the possibilities and necessity of self-sustainability of critical government services on Gotland
- Human rights and gender equality should be taken into consideration
- Residual list at the end of the assignment

# Total defence development program



\* Eleven sectors of critical societal functions (the equivalent of Natos requirements for resilience). Handlingsplan för skydd av samhällsviktig verksamhet, MSB 2013, s 14 & Seven areas of priority, Nationell risk- och förmågebedömning 2017, MSB 2017, s 6

# Eleven sectors of critical societal functions.

**MSB's prioritized sectors of society:**

- 1. Energy supply**
- 2. Financial services**
3. Trade and industry
- 4. Health care**
- 5. Information and communication**
6. Municipal technical supply
- 7. Food and water resources**
8. Public administration
- 9. Protection and security**
10. Social insurance
- 11. Transport systems**



**MSB – Swedish Civil  
Contingencies Agency**

# Challenges

- Security protection
- Build staff competence
- Align national and regional planning
- A lot to do in a short time



# Success factors

- The interest of industry and commerce. However, their role and responsibility is a current being discussed
- Not a project, part of line management
- Relevant and several national authorities involved in the working groups
- Proximity and presence of the Swedish Armed Forces
- Large interest outside Gotland – spurring!
- Led by the County Administrative Board

# Self-sufficient

Regarding for example

- Fuel
- Food
- Power distribution
- Communication



# Together towards a stronger Gotland!

## Cooperation on all levels

- Local
- Regional
- National

## Industry and commerce

What can the authorities do for businesses so they can continue to function during a crisis.



# Total defence Workgroup Energy supply

We need to ensure function of critical community services regarding:

- Fuel (storage, gas station, distribution)
- Electricity (emergency power, increased delivery reliability)
- Heating (homes and hospitals etc)

For up to 90 days





# Total defence Workgroup Energy supply

- Robust and renewable energy systems
- Small scale energy solutions
- Energy efficiency
- Transition to renewable energy
- Increase the regional production of renewable energy



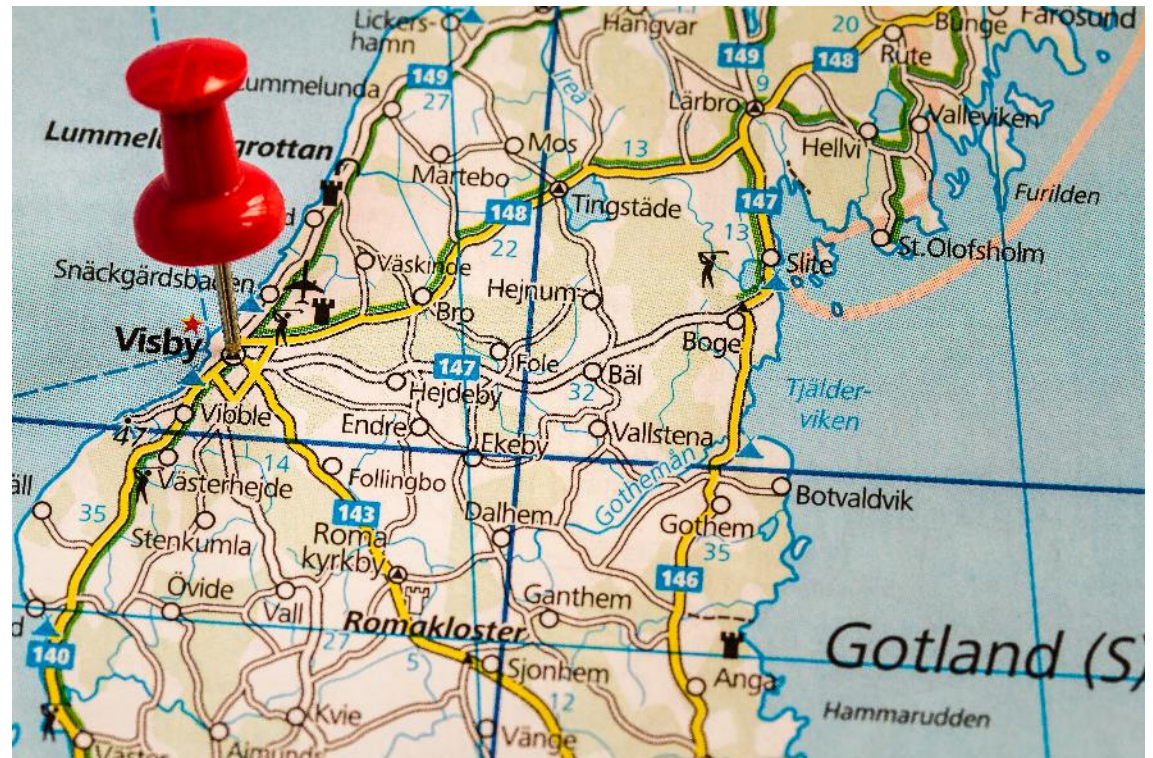
# Tack för att ni lyssnade!

Thank you for your  
attention!

Simon Härenstam

The department for social sustainability and  
emergency preparedness

County Administrative Board



# The seven baseline requirements

- 1) assured continuity of government and critical government services
- 2) resilient energy supplies
- 3) ability to deal effectively with the uncontrolled movement of people
- 4) resilient food and water resources
- 5) ability to deal with mass casualties
- 6) resilient communications systems
- 7) resilient transportation systems



# Eleven sectors of critical societal functions, the equivalent of Natos requirements for resilience.

## MSB's prioritized sectors of society:

1. Energy supply
2. Financial services
3. Trade and industry
4. Health care
5. Information and communication
6. Municipal technical supply
7. Food and water resources
8. Public administration
9. Protection and security
10. Social insurance
11. Transport systems



**MSB – Swedish Civil  
Contingencies Agency**





# Upside down World Map

© Hema Maps Pty Ltd 2009

## LEGEND

Capital • City, Town •

**Hema Maps Australia**  
Ph: +61 7 3340 0000 Fax: +61 7 3340 0099  
manager@hemamaps.com.au  
www.hemamaps.com

**Hema Maps New Zealand**  
Ph: +64 9 273 6459 Fax: +64 9 273 6479  
sales@hemamaps.co.nz

**Hema Maps North America**  
Ph: +1 317 257 4362 Fax: +1 317 257 5362  
info@hemamaps.com

Country Abbreviations

BOSNIA HERZ.	Bosnia Herzegovina
BULG.	Bulgaria
KO.	Kosovo
LIE.	Liechtenstein
LUX.	Luxembourg
MAC.	Macedonia
MONT.	Montenegro
RUS. FED.	Russian Federation